

The University of Georgia
Large Ensemble Placement Auditions
Tuba – Fall 2025

Hi Everyone,

I hope you are all having a great summer break and are looking forward to starting/coming back to UGA this fall! As always, we will begin the school year with large ensemble auditions. Auditions will take place Tuesday August 12 starting after the euphonium audition around 4:30 PM in the Choral Suite, room 355.

I know the level of playing will be very high, and I'm looking forward to hearing each of you do your best!

A great audition will display:

- A beautiful sound
- A great sense of pulse and rhythm
- Excellent pitch accuracy and intonation
- Dynamic and stylistic contrast where appropriate
- Clear musical intent

All of these selections are excerpts from larger pieces of music. You will NOT be successful unless you take the time to listen to great reference recordings of these works, and understand how your part fits into the larger context of the composition. This is also how you find the most appropriate style and tempo that you will play with. Pay special attention to the last bullet point above. While being technically proficient and accurate is important, making sense and creating a musical product are the most important things.

Good luck!

- Dr. Shipes

Repertoire (all lower divisi)

- Persichetti - Symphony for Band: Movement 1, mm. 141 – 156
- Hindemith – Symphony in Bb
 1. Movement 1, Letter I through K
 2. Movement 1, measure 203 to the end
- Rachmaninoff – Symphony No. 2: Movement 2, rehearsal 35 – 7 after 36
- Wagner – Ride of the Valkyries: Rehearsal 11 to 5 after 12
- Sight Reading

Persichetti - Symphony for Band, Movement 1
Measure 141 to measure 156



150



Hindemith - Symphony in Bb, Movement 1

Letter I through K

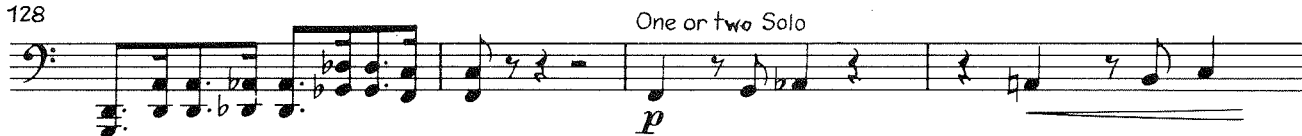
Ⓢ tutti



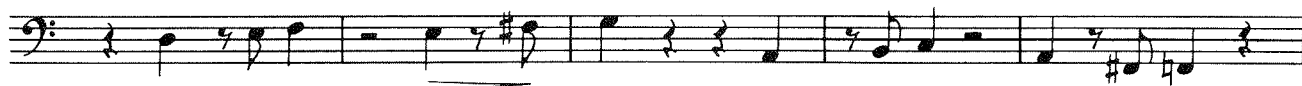
124



128



132



137

Ⓜ tutti



141



145



150



154

Ⓚ



Hindemith - Symphony in Bb, Movement 1

Measure 203 to the end



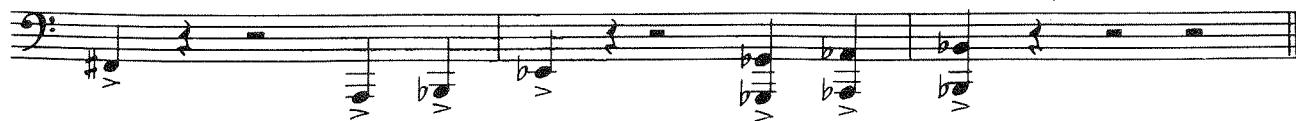
205



207



210



Rachmaninoff - Symphony No. 2, Movement 2

Rehearsal 35 to 36

This musical score snippet covers Rehearsals 35 and 36 of the second movement of Rachmaninoff's Symphony No. 2. It features three staves in bass clef. The top staff begins with a treble clef and contains a melodic line with dynamic markings *pp leggiero* and *poco cresc.*. The middle staff continues the melodic line with dynamics *pp*, *un poco cresc.*, *mf dim.*, and *pp*. The bottom staff provides a harmonic accompaniment, starting at rehearsal mark 36 with a *pp* dynamic. The key signature has two flats, and the time signature is 6/8.

Wagner - Ride of the Valkyries

Rehearsal 11 to 5 after 12

